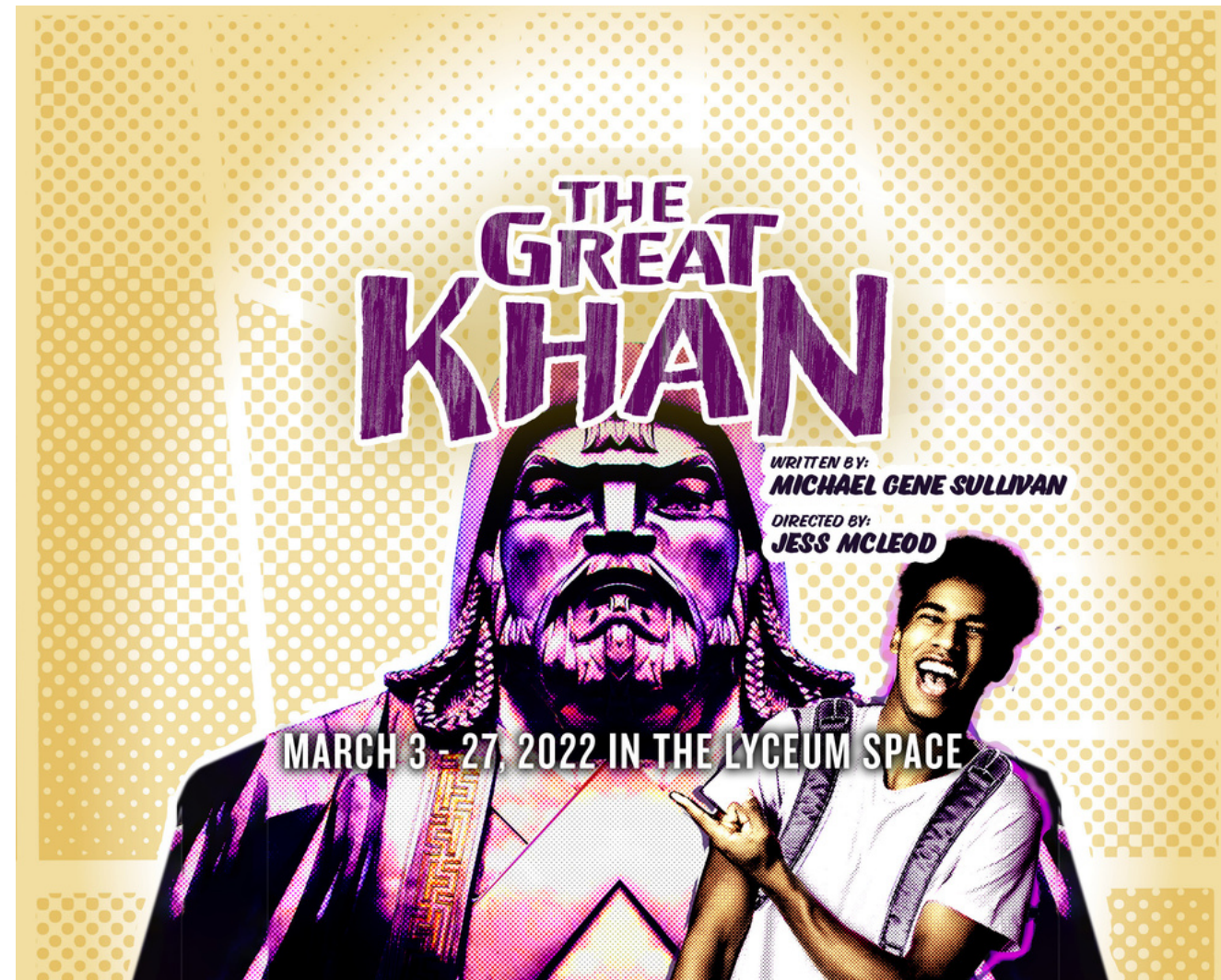


Going to the San Diego Repertory Theatre

ADA Directions

A SENSORY FRIENDLY DIRECTIONAL GUIDE

Welcome to the San Diego Repertory Theatre!
Today I am seeing "The Great Khan"



I will see actors speaking their lines and moving on stage. The actors will be wearing costumes. There will sometimes be music playing, special effect sounds, and lighting on the stage. Here are some things I will see when I come to the show!

These are the parking stations I can choose to park at for the show...

If I have a hard time with stairs, I will use the theatre's accessibility tunnel for parking. Here are the parking directions that I will use to access the theatre's freight elevator.

The tunnel for me to enter is located right next to the Horton Plaza parking center. There will be a sign indicating where I will enter to access the tunnel.

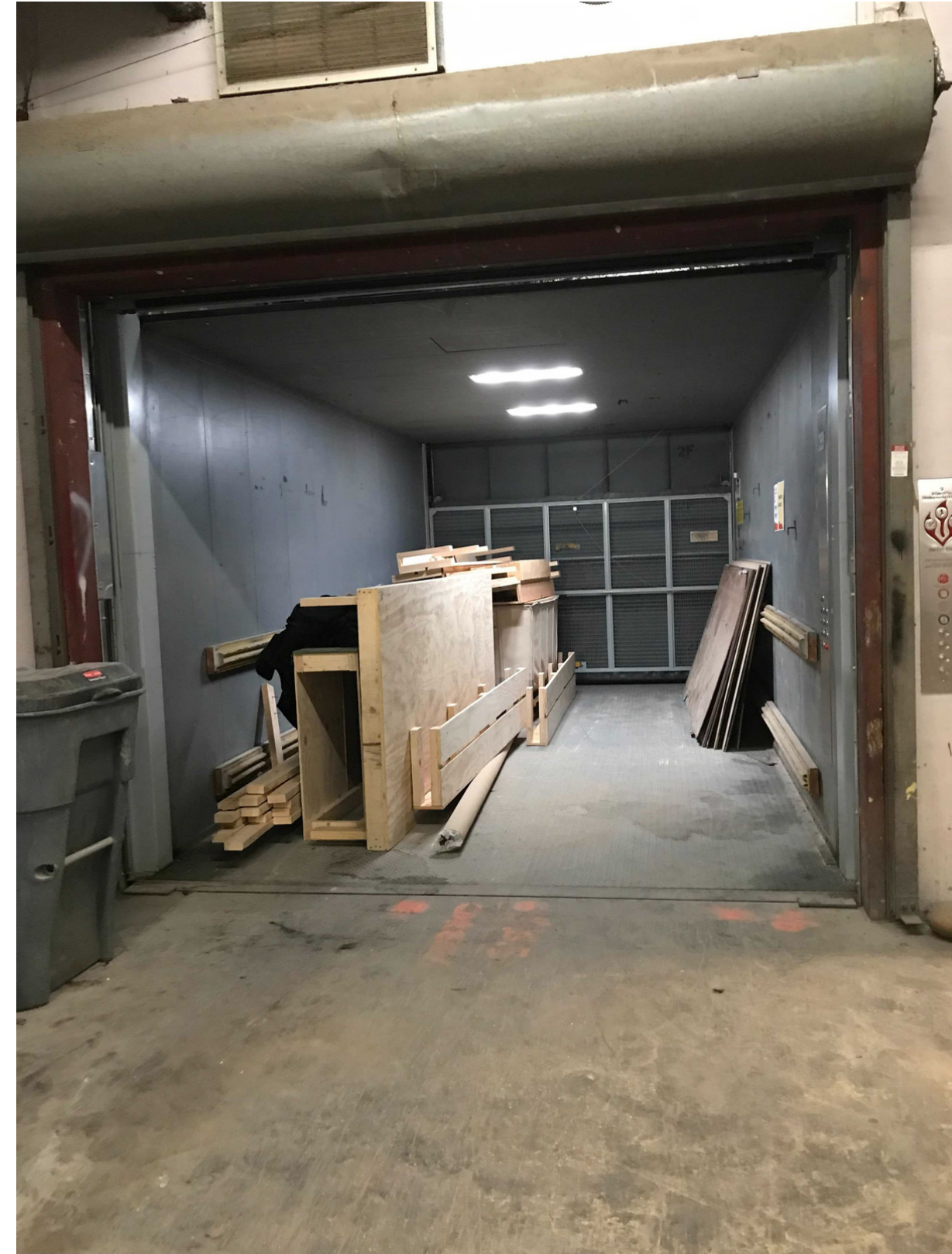


Once I drive down the tunnel, I will see helpers there to help park my car. These helpers will check my vaccination status OR proof of negative test.

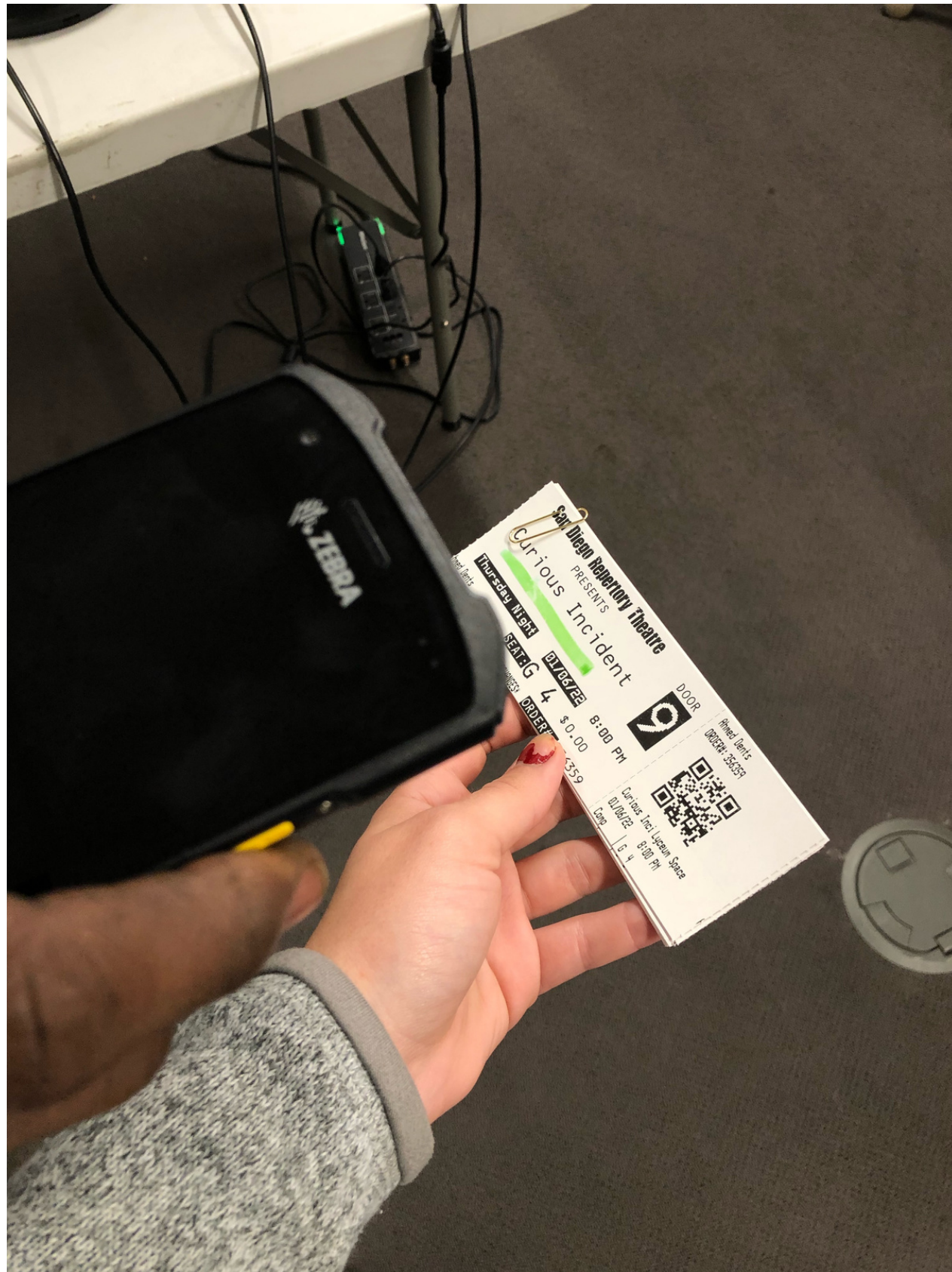


There will be a ramp to walk up to get to the elevator

A helper will be present to help me ride the elevator.



After I ride the elevator down I will be in the theatre!



There will be helpers holding scanners for me to scan my ticket. I will have my ticket either printed out or on my phone.

**There will be
bathrooms on the top
floor to the left of the
entrance.**



**There will also be
bathrooms downstairs
behind the stairs.**



If I need to take a break at any point before, during, or after the show, the main lobby will be open for me to do so.



At the end of the show, I will meet a helper at the front of Door 8. They will lead me through the hallway and I will ride the elevator back up to my car.